

Description

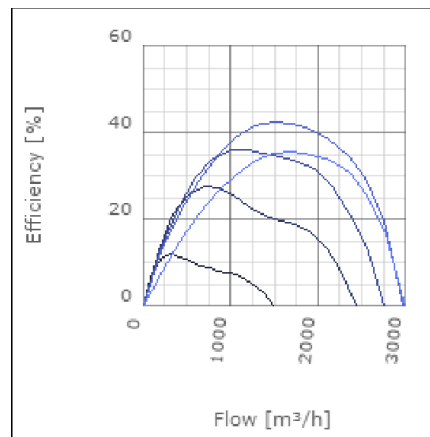
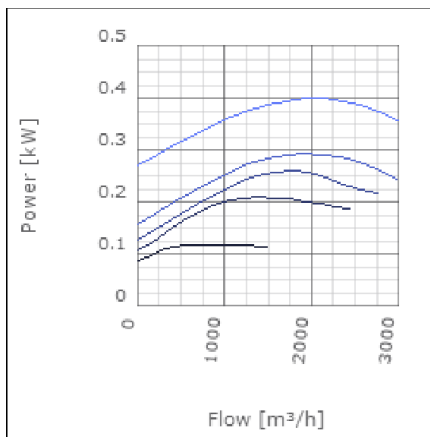
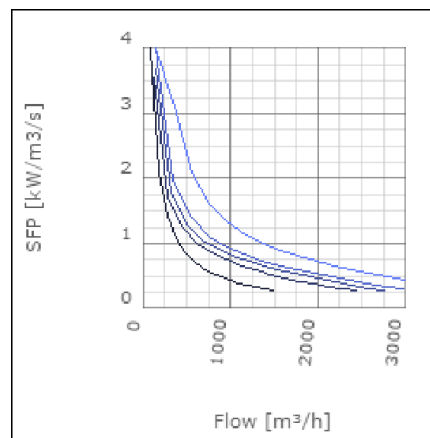
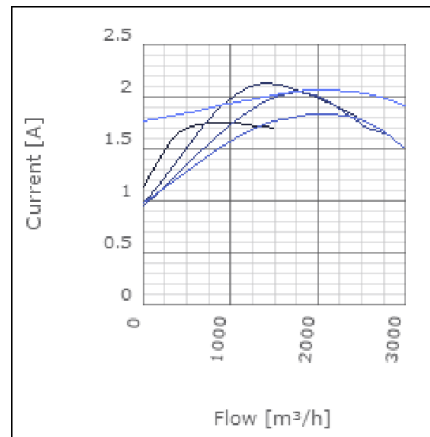
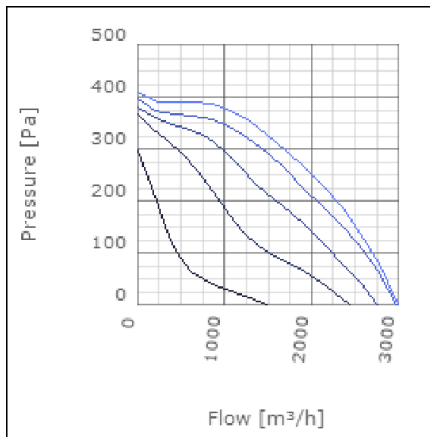
RKBI is an insulated centrifugal duct fan with connections for rectangular ducts. The fan have a rigid housing of galvanised steel and are compact with high capacity. With the 50 mm high quality insulation it operates quiet and the surface of the insulation is easy to clean. RKBI is available in 16 capacities. The backward curved impeller gives a better efficiency over a very big working area than the forward curved impeller. The fan is designed to cope with high pressures i.e. long ducts with a minimum of noise. The motor is speed-controllable from 0-100% and maintenance-free, why the only service required is cleaning the impeller. Motor with impeller can be swung out for inspection and cleaning (swing-out). The RKBI fan is supplied fully-wired and ready to fit in a sealed installation unit. It is moisture-proof and approved for use in warm or cold environments. All fans are fitted with a built-in thermal protector.



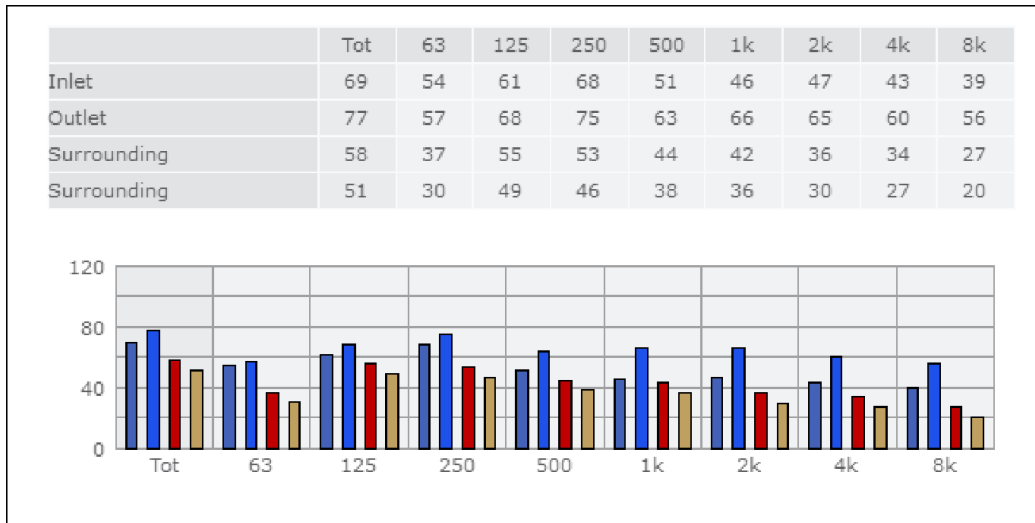
Technical data

| Parameter | Value | Unit |
|---|---------------|-------|
| Voltage | 230 | V |
| Phase | 1 | ~ |
| Frequency | 50 | Hz |
| Power | 0.41 | kW |
| Current | 2.11 | A |
| R.p.m. | 23 | r/s |
| Max. temperature of transported air | 40 | °C |
| Max. temperature of transported air when speed-controlled | 40 | °C |
| Sound pressure level at 3 m | 55 | dB(A) |
| Length | 747 | mm |
| Width | 707 | mm |
| Height | 489 | mm |
| Weight | 51 | kg |
| Enclosure class, motor | 44 | IP |
| Insulation class, motor | F | |
| Capacitor | 12 | µF |
| Duct connection | 600x350 mm | |

Diagrams



Sound



Parameter

Distance: 3.000
 Propagation type: Hemi-spherical
 Equivalent absorption area: 20.00

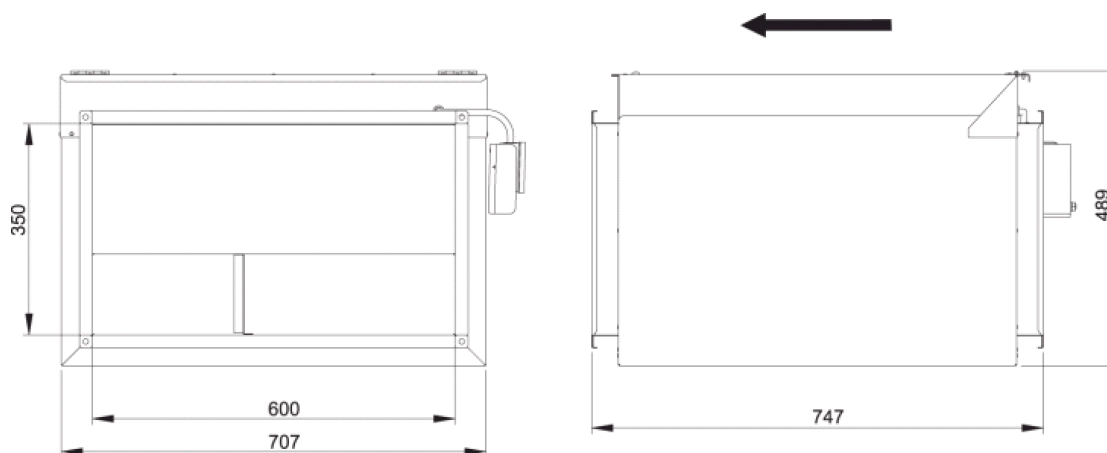
Checked point

Flow 1676.259m³/h
 Static pressure 302Pa

Working point

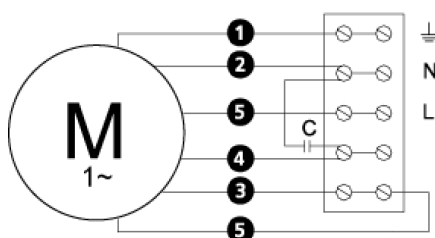
Flow 1677.33m³/h
 Static Pressure 302Pa
 Power 0.4kW
 Speed 0r/s
 Current 2.05A
 Voltage 230V
 Efficiency 35.669%
 SFP 0kW/m³/s

Dimensions



Wiring diagram

4040005



- Ⓜ = Fan Motor
- Ⓜ1 = Fan Motor
- Ⓜ2 = Fan Motor
- Ⓜ3 = Rotor Motor
- ① = Yellow/Green
- ② = Black
- ③ = Blue
- ④ = Brown
- ⑤ = White (TW)
- ⑥ = Orange
- ⑦ = Grey
- ⑧ = Red
- ⑨ = Green
- ⑩ = Violet

Accessories

ETFV-94A
FRE 6
VRDE 3
VRS 4,0
VRTE 3

Electrical accessories

FLR 600x350
DS 600x350
LDR 600x350